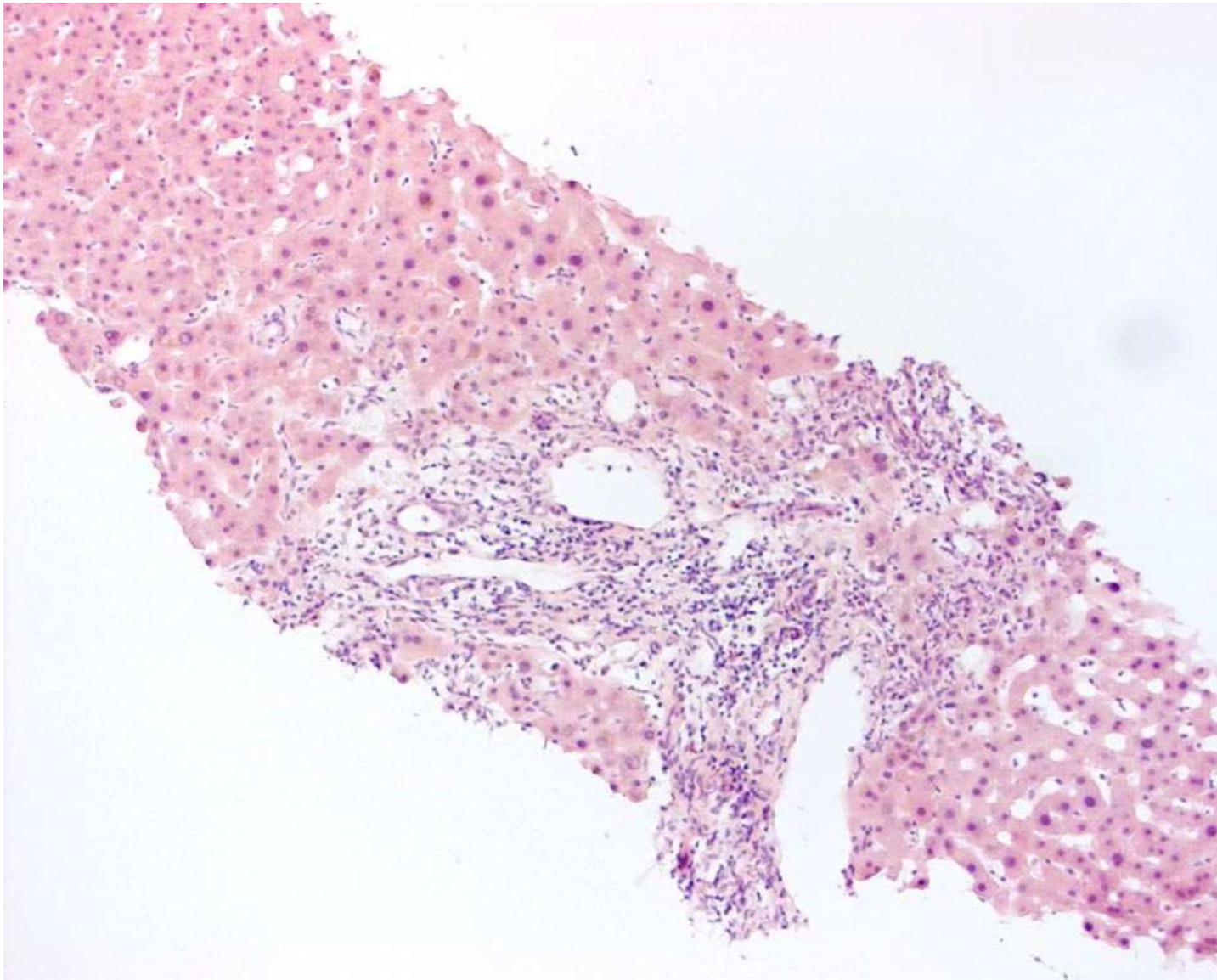


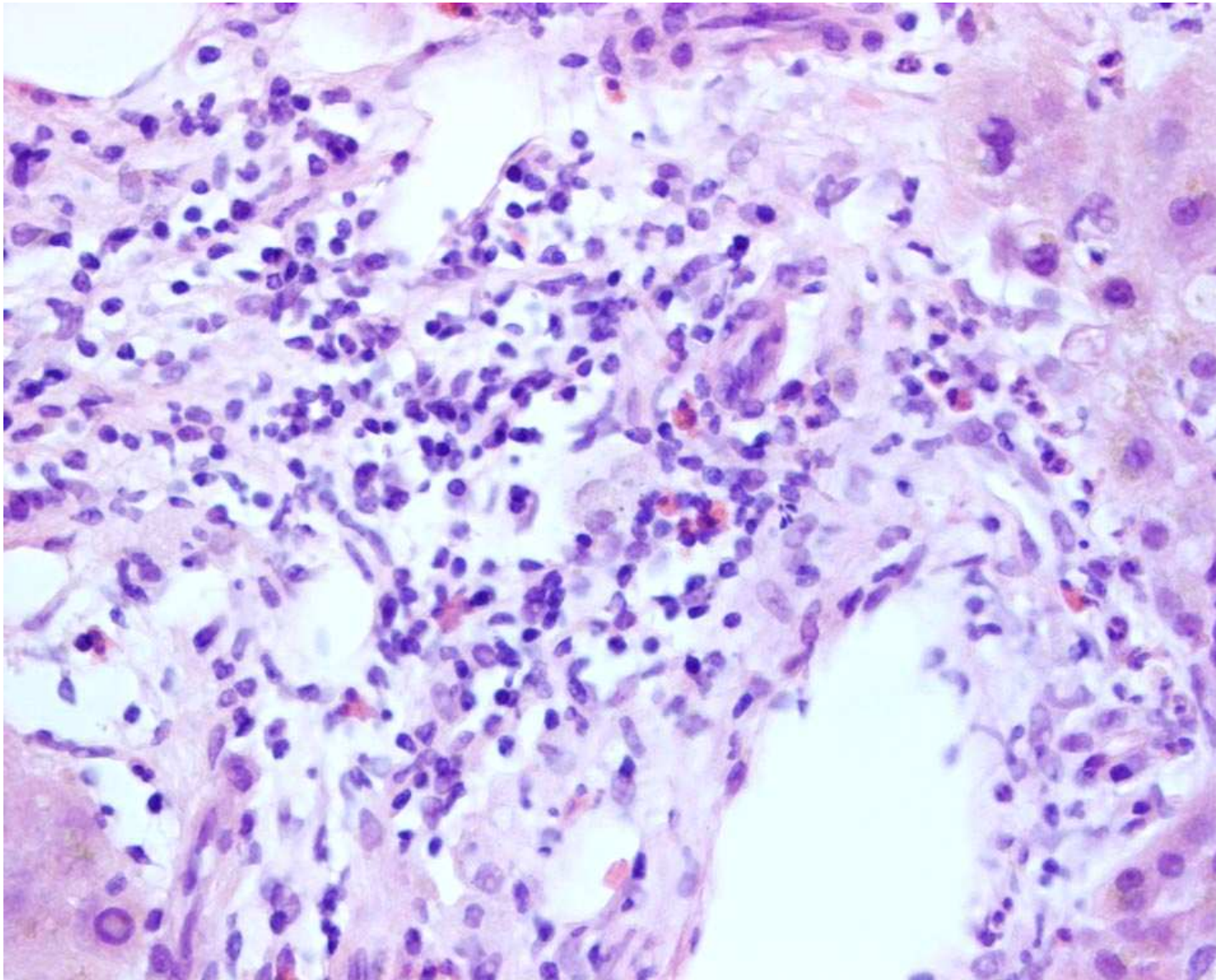
# ACB Liver Case 1

# Case history

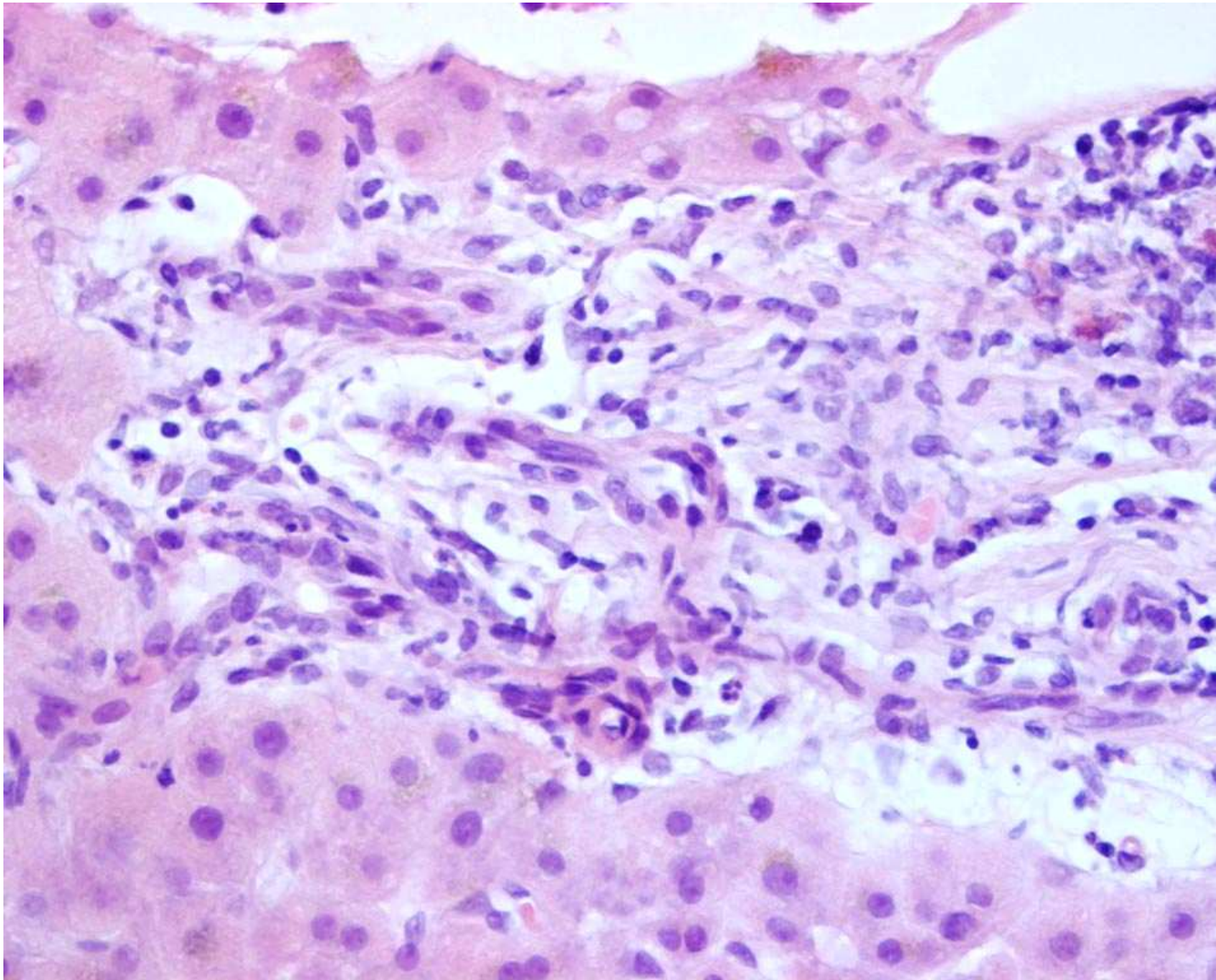
- 86 year old man
- Three week history of cholestatic jaundice
- Liver screen negative
- Liver biopsy



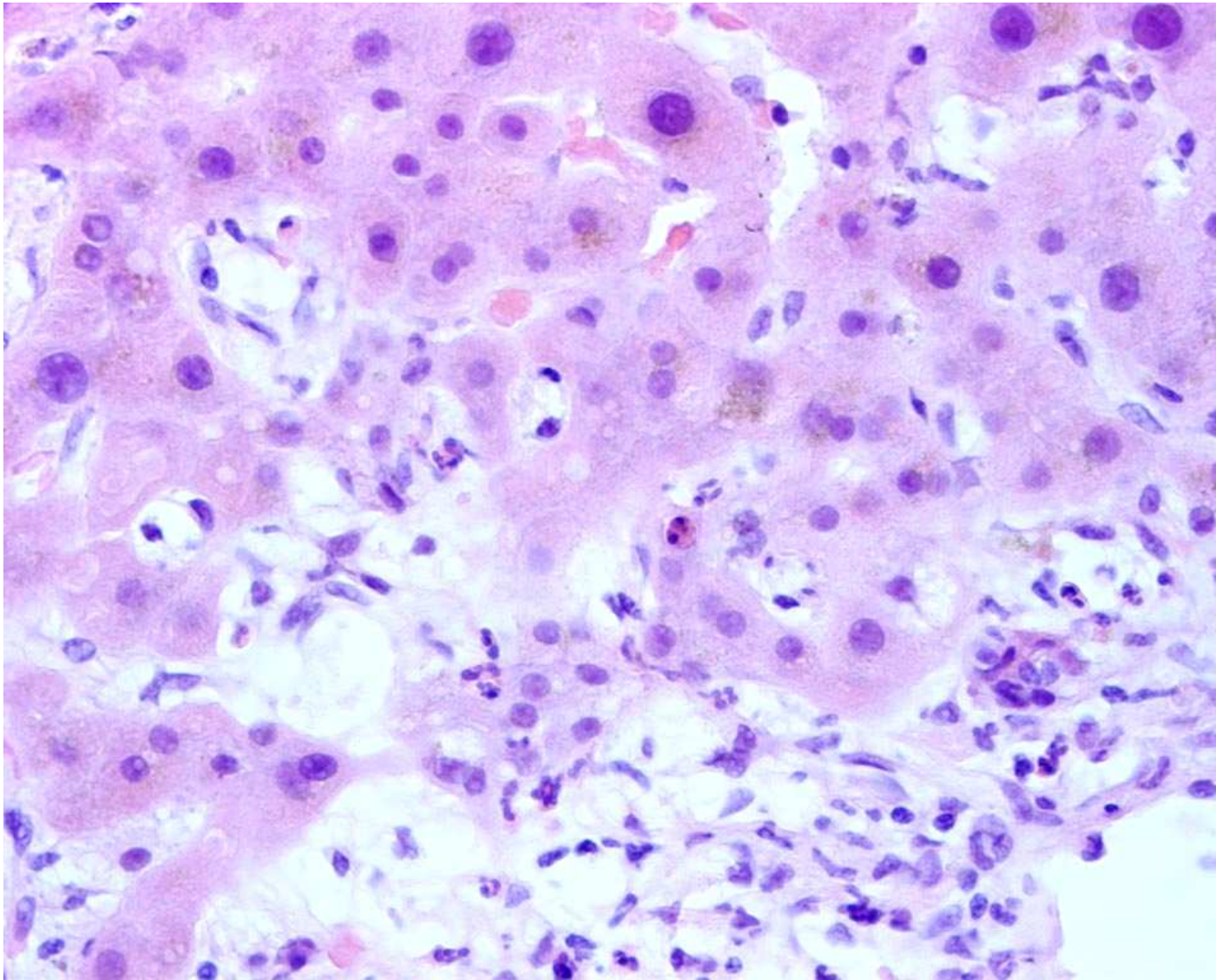
Southampton Cellular Pathology



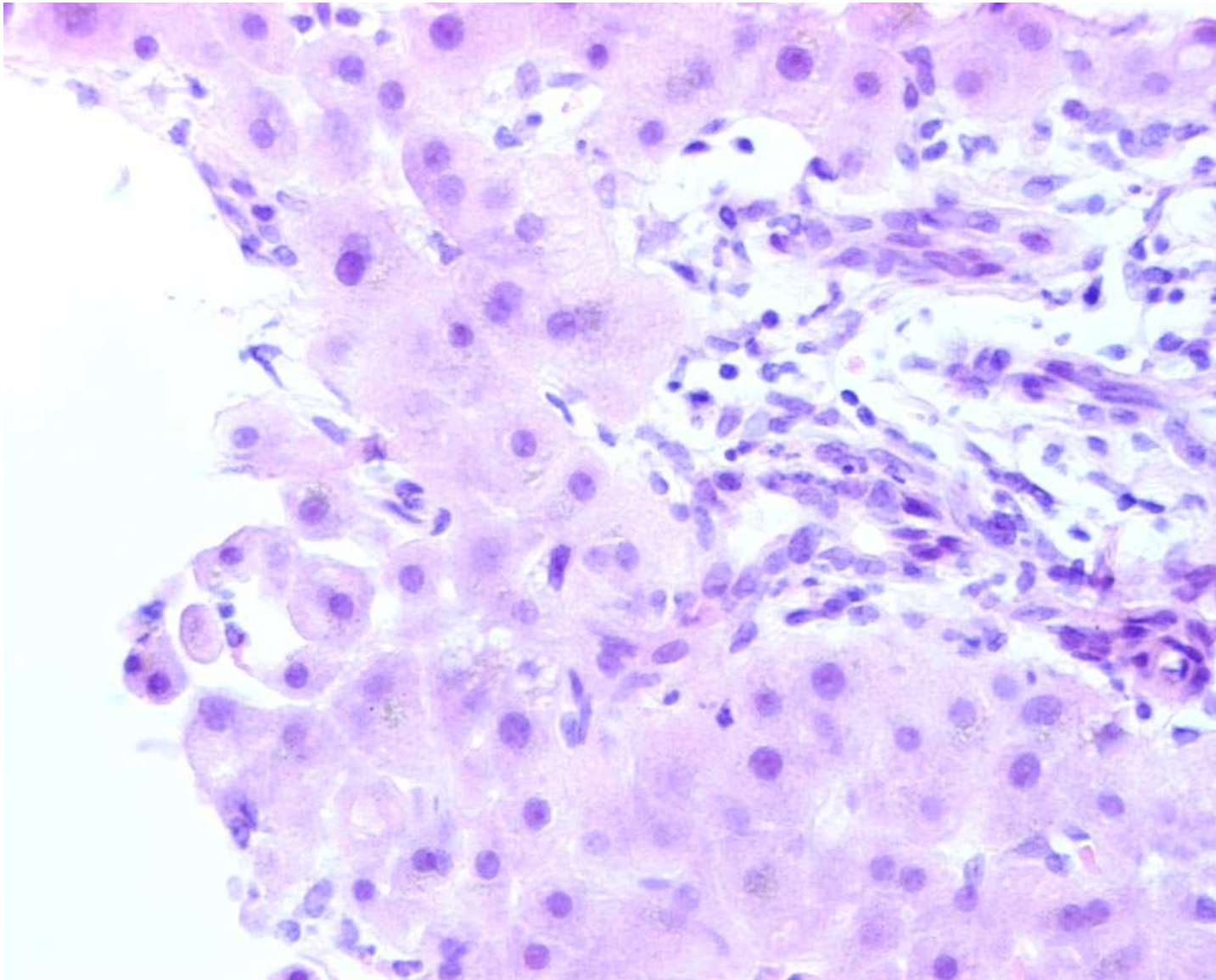
Southampton Cellular Pathology



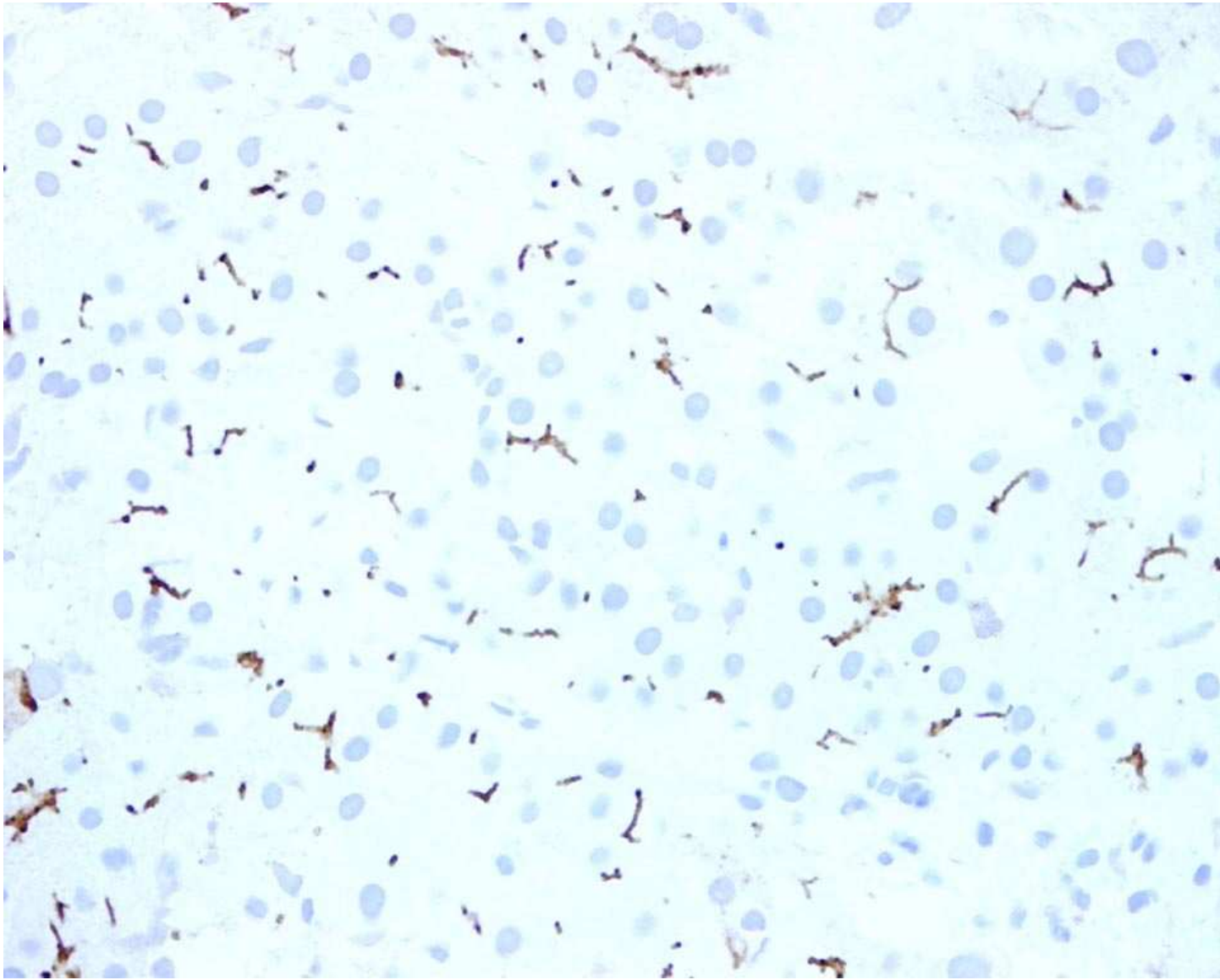
Southampton Cellular Pathology



Southampton Cellular Pathology



Southampton Cellular Pathology



Southampton Cellular Pathology

# Further investigations

- Ultrasound scan
  - Gallstones in gallbladder
  - Common bile duct not dilated
- CT scan
  - Otherwise normal

# Additional history

- Cut hand while gardening 4-5 weeks ago
- Cellulitis requiring IV flucloxacillin
- Jaundice developed within a few days
- Prednisolone 30mg then reducing dose
- Liver function gradually settled

# Flucloxacillin reaction

# Key features

- Portal tract oedema
- Mild mixed portal tract infiltrate
  - Some eosinophils present
- Reactive bile ductular epithelium
- Canalicular cholestasis

# Patterns of drug reaction

Necrosis	Paracetamol
Steatosis	Alcohol, methotrexate
Cholestasis – bland	Anabolic & contraceptive steroids
Cholestasis – cholangiolytic	Flucloxacillin, erythromycin, chlorpromazine
Hepatic vein thrombosis	Contraceptive steroids
Chronic hepatitis	Nitrofurantoin, etretinate
Chronic cholestasis	Chlorpromazine
Granulomas	Allopurinol
Veno-occlusive disease	Antineoplastic agents

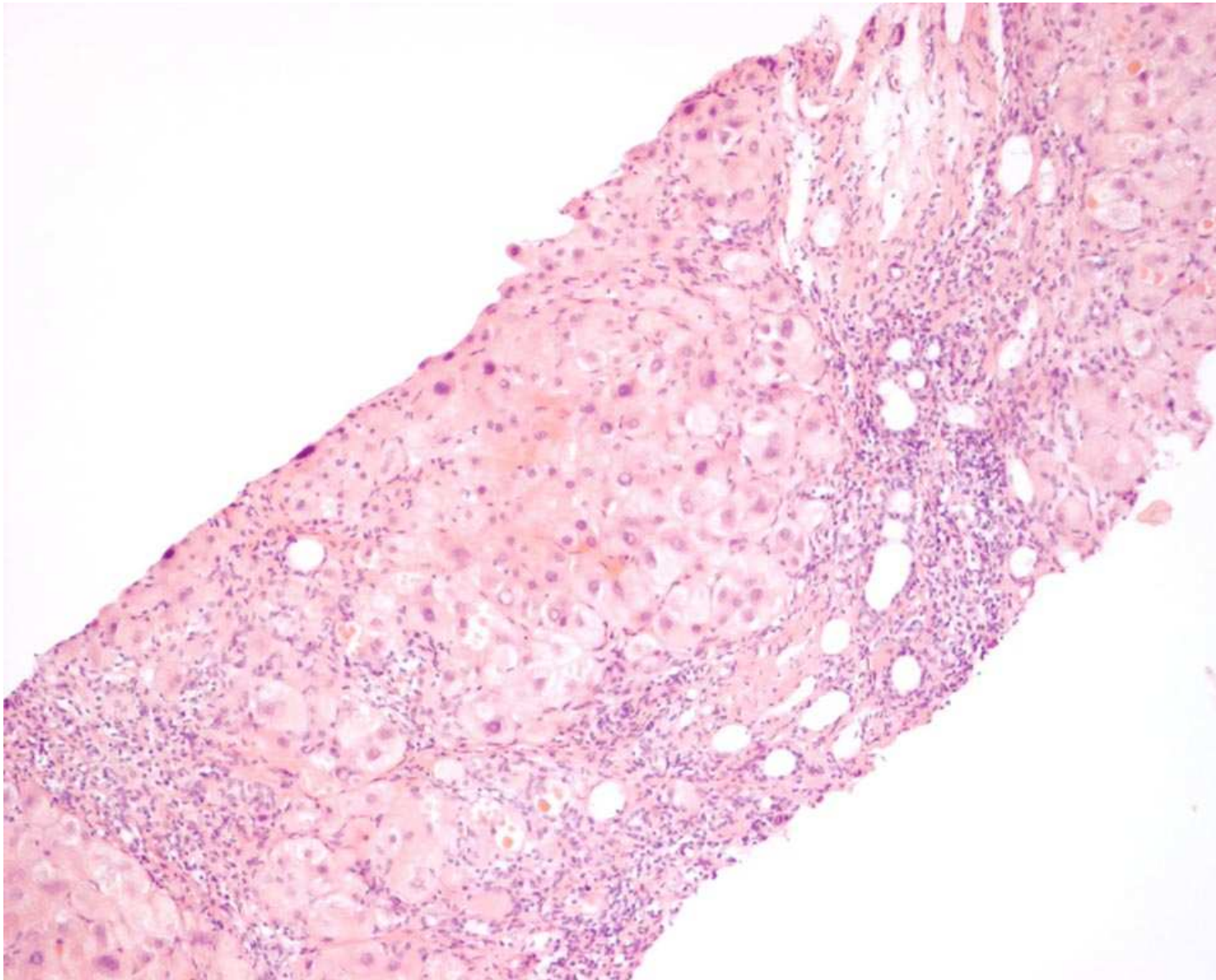
# Messages

- Always consider a drug reaction
- Variety of patterns possible
- Clinical history essential
  - Non-prescription drugs
  - Alternative medicines

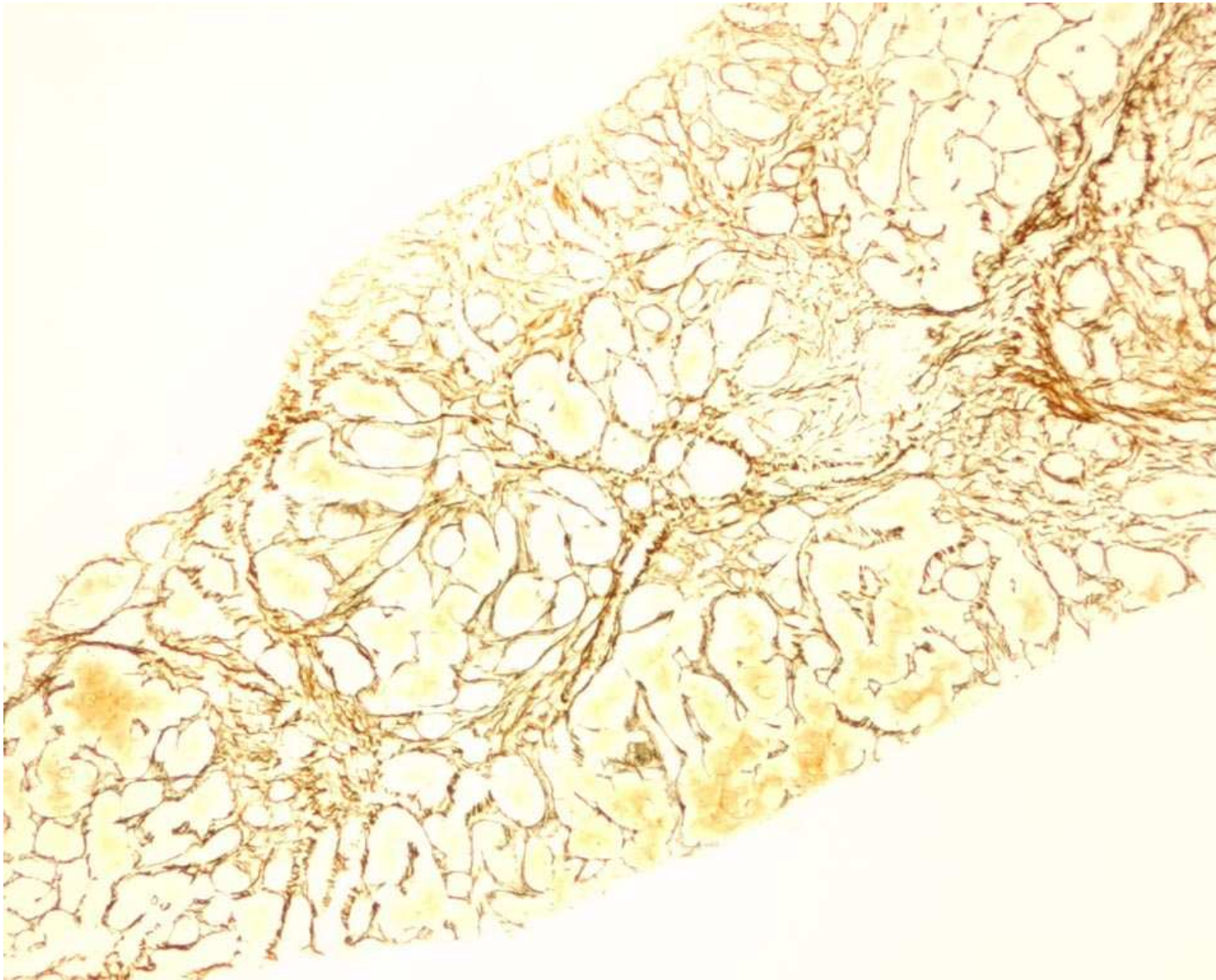
# ACB Liver Case 2

# Clinical history

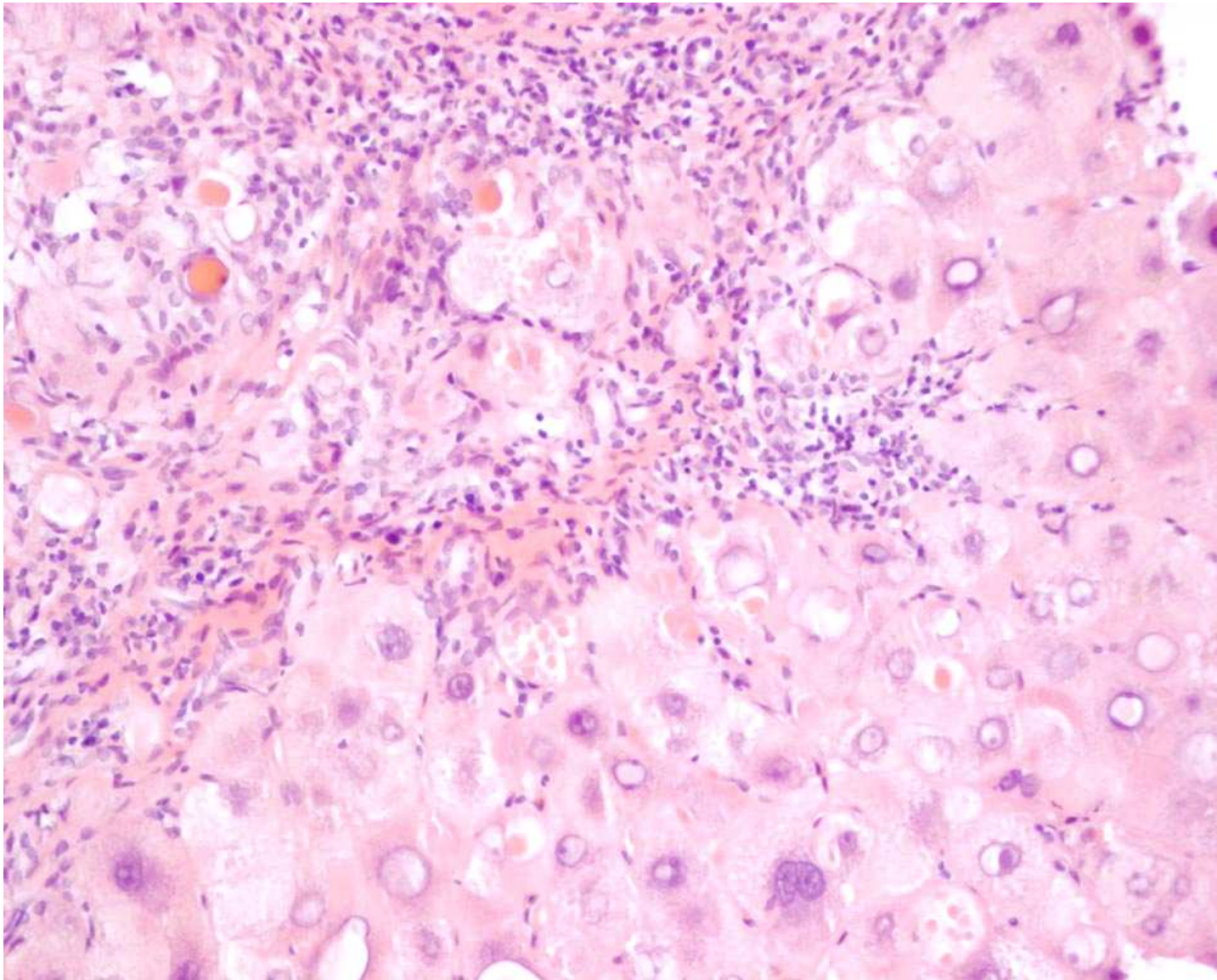
- 70 year old man
- Portal hypertension
- Large right lobe mass
- Very difficult biopsy
- ? HCC on background of ALD



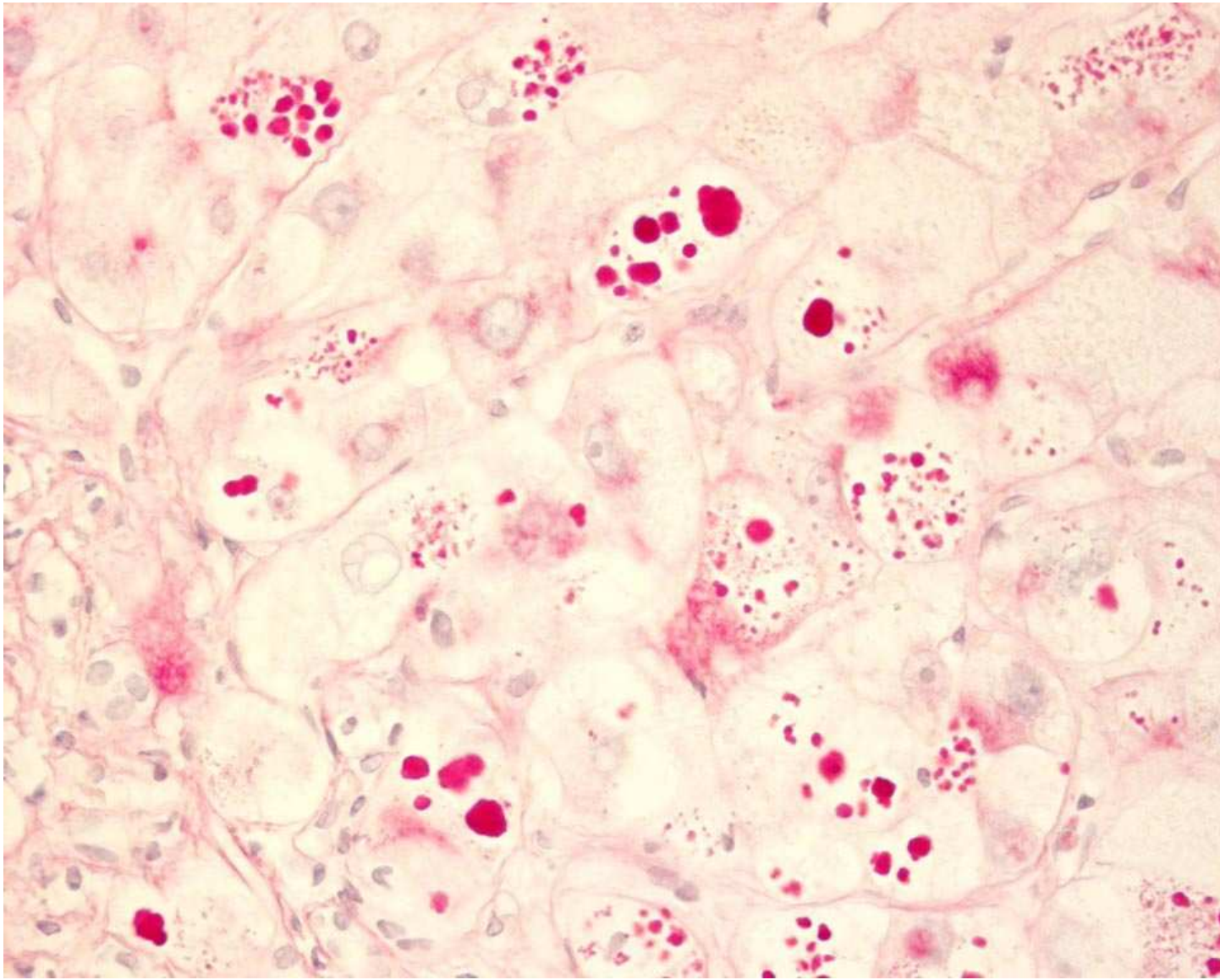
Southampton Cellular Pathology



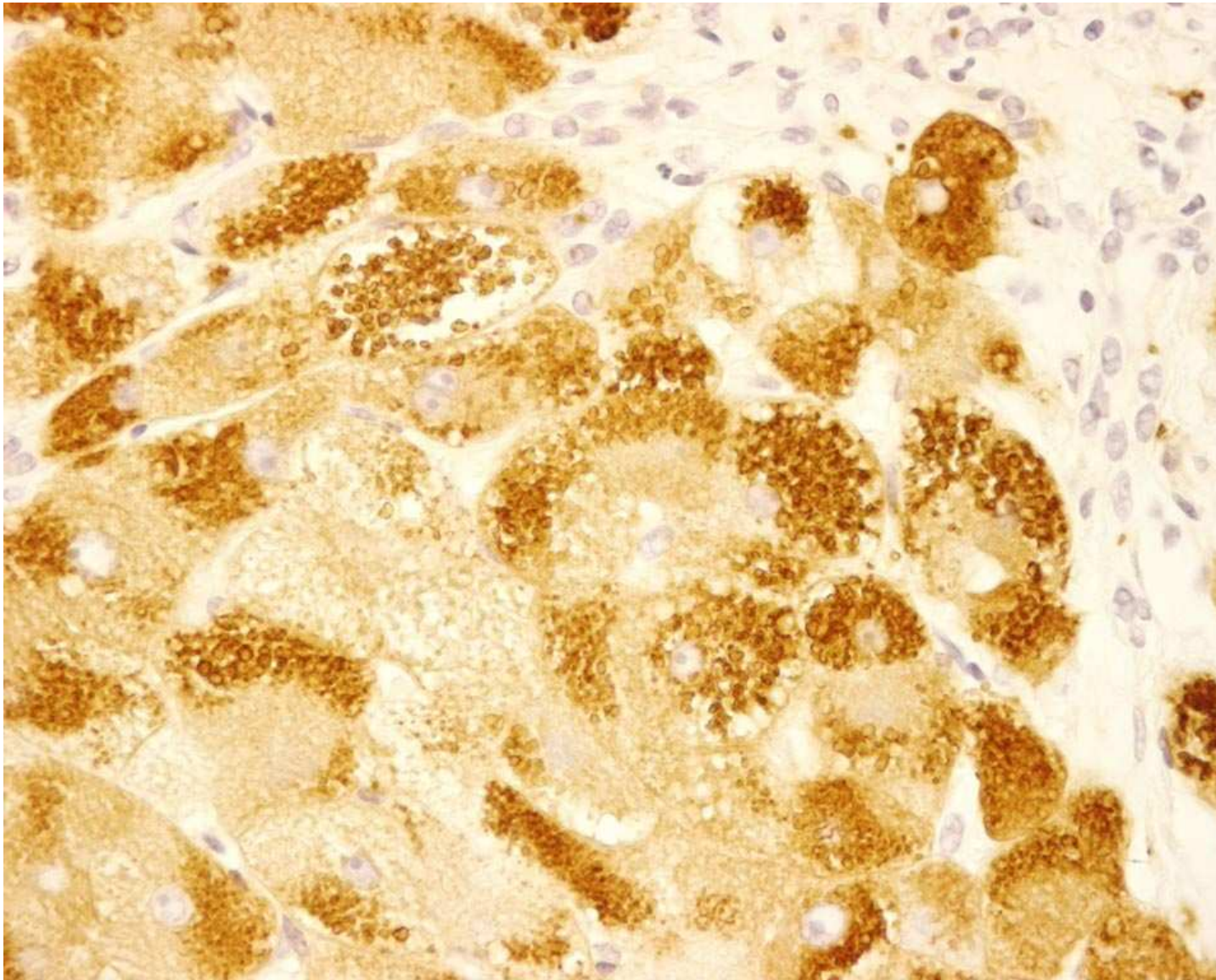
Southampton Cellular Pathology



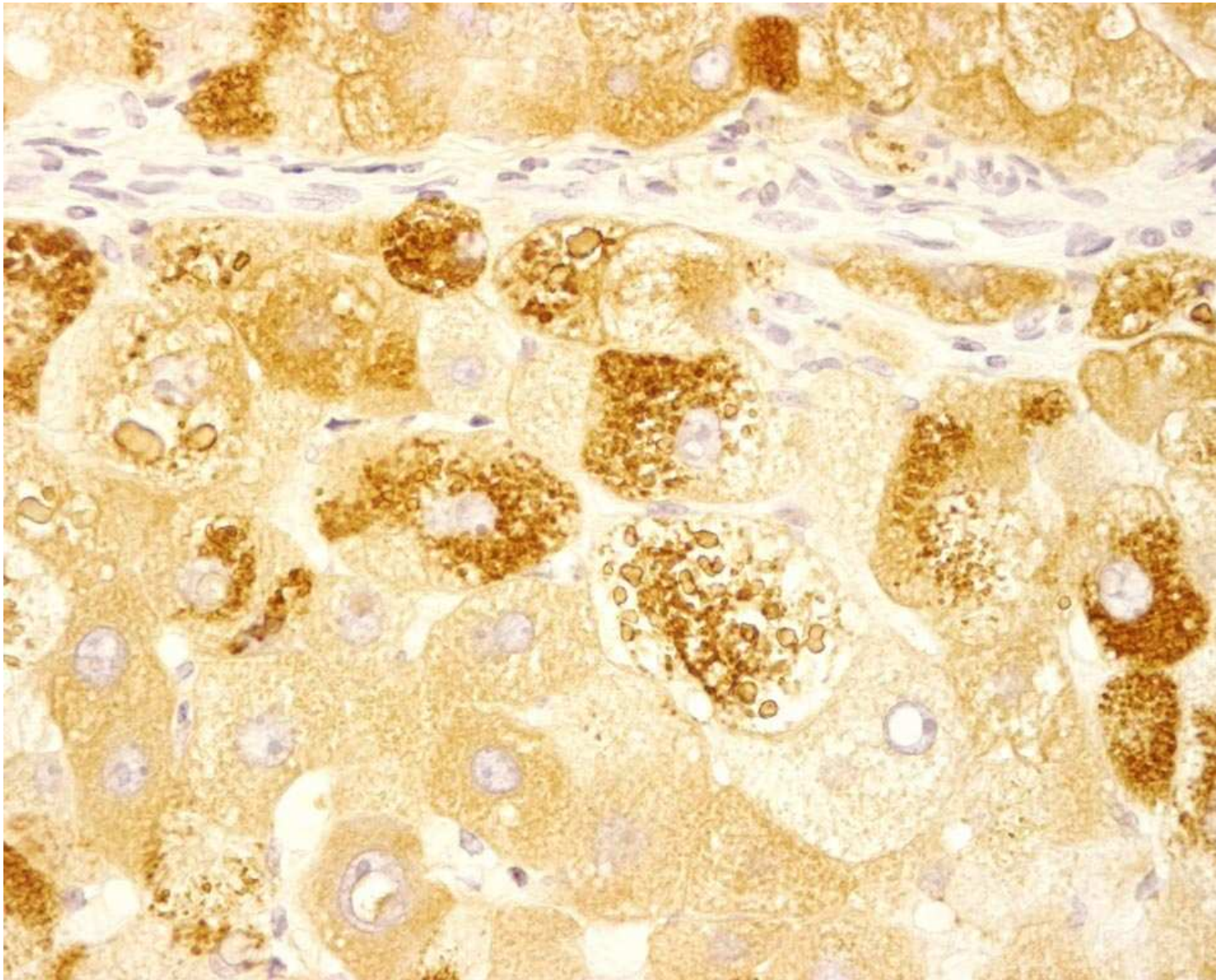
Southampton Cellular Pathology



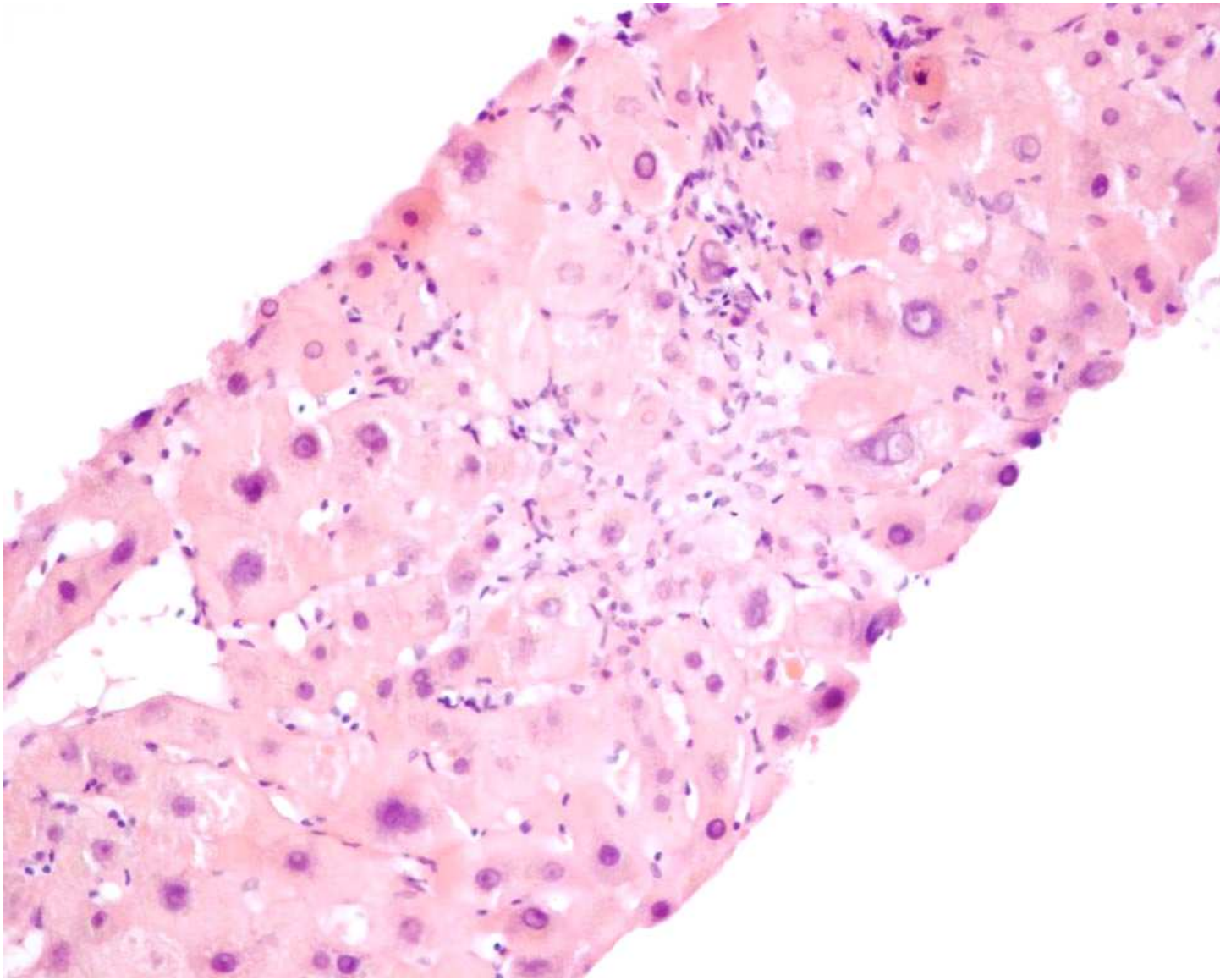
Southampton Cellular Pathology



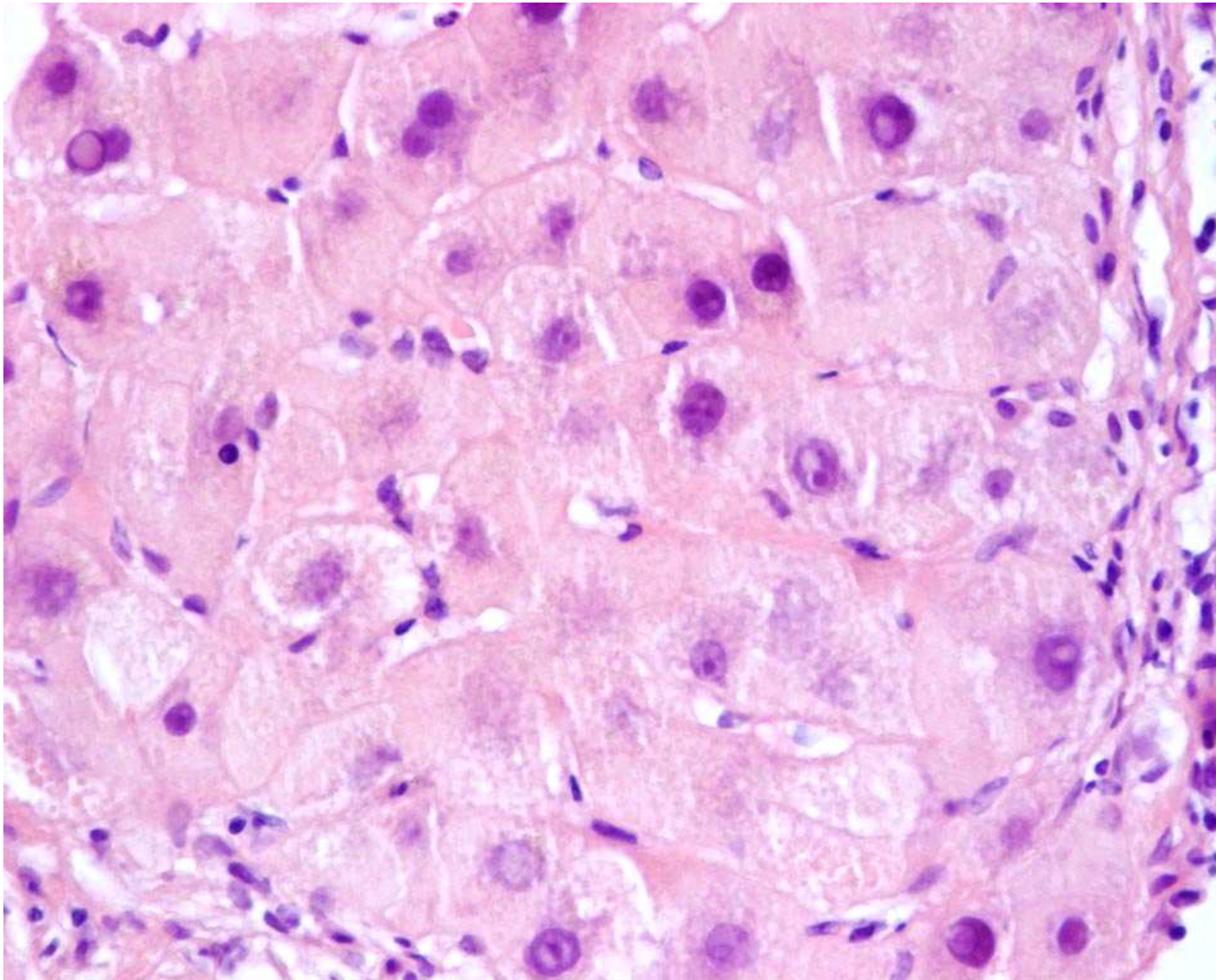
Southampton Cellular Pathology



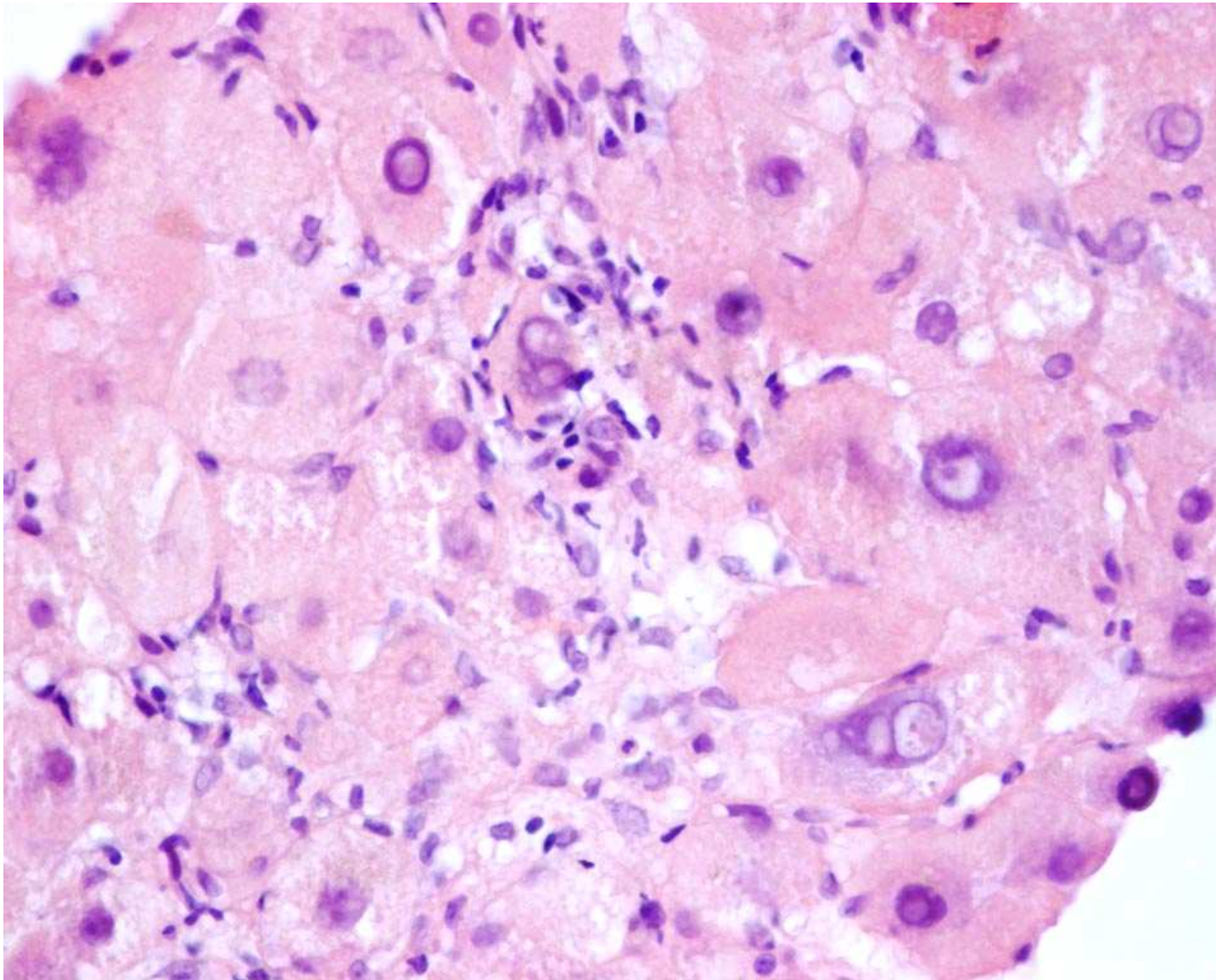
Southampton Cellular Pathology



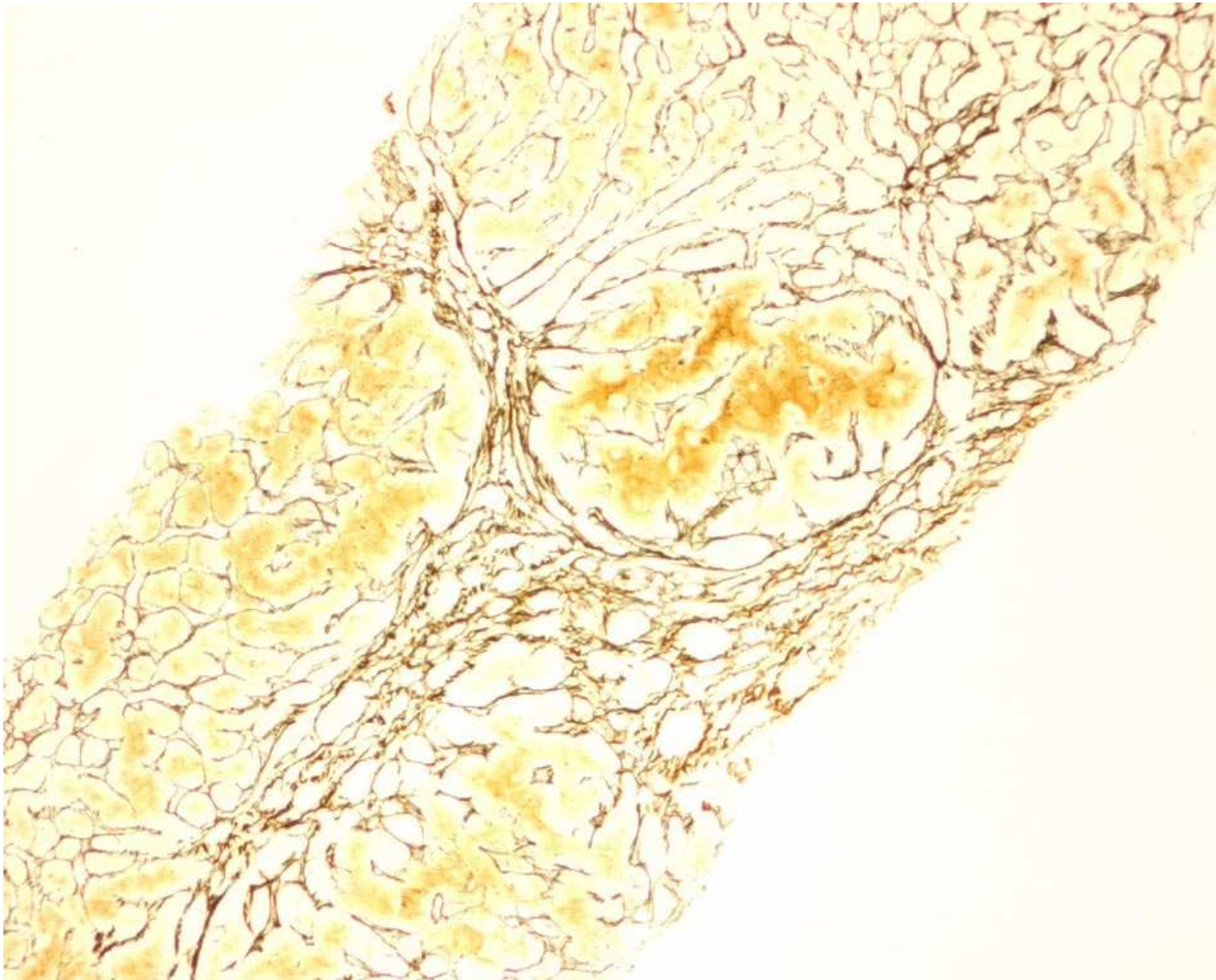
Southampton Cellular Pathology



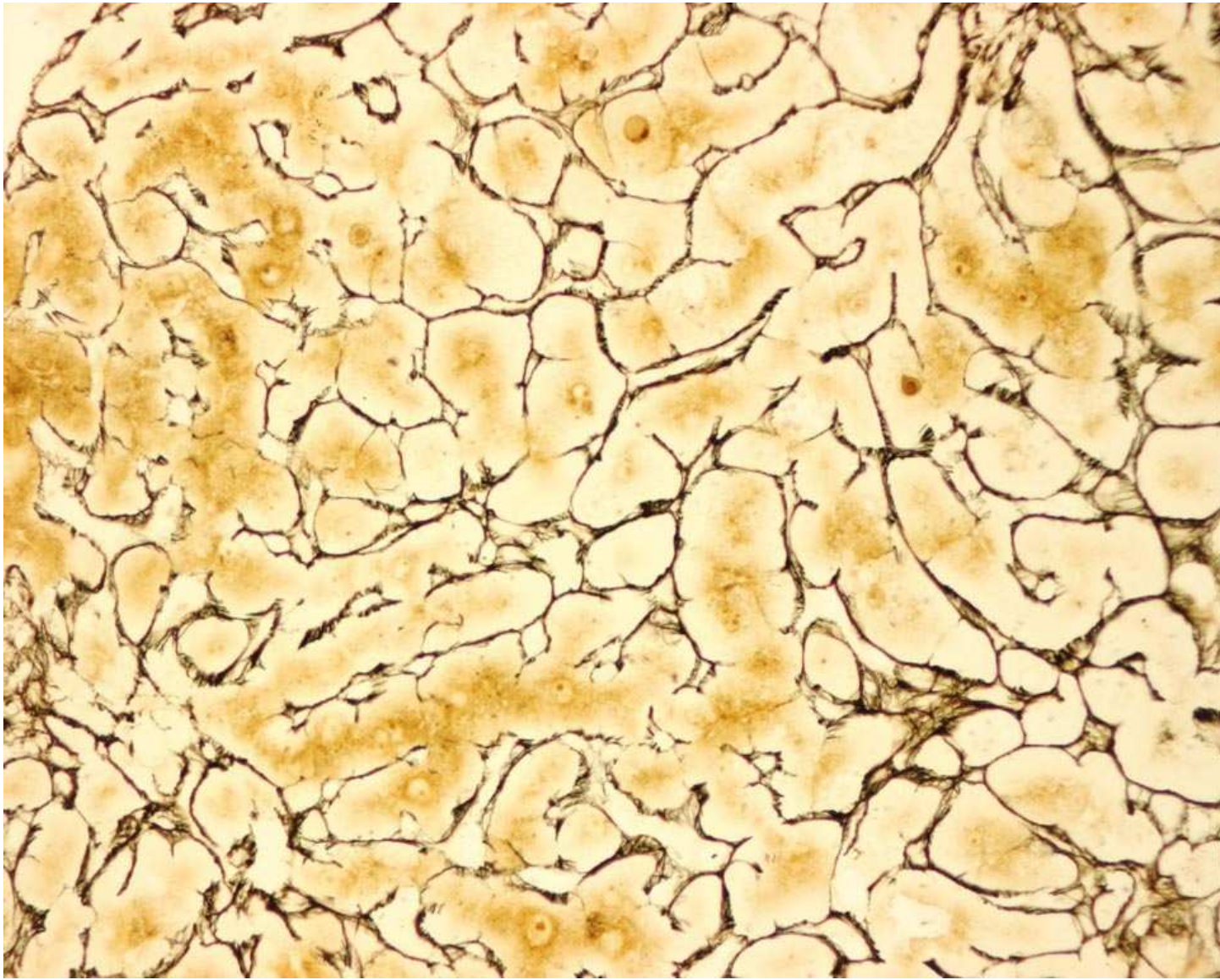
Southampton Cellular Pathology



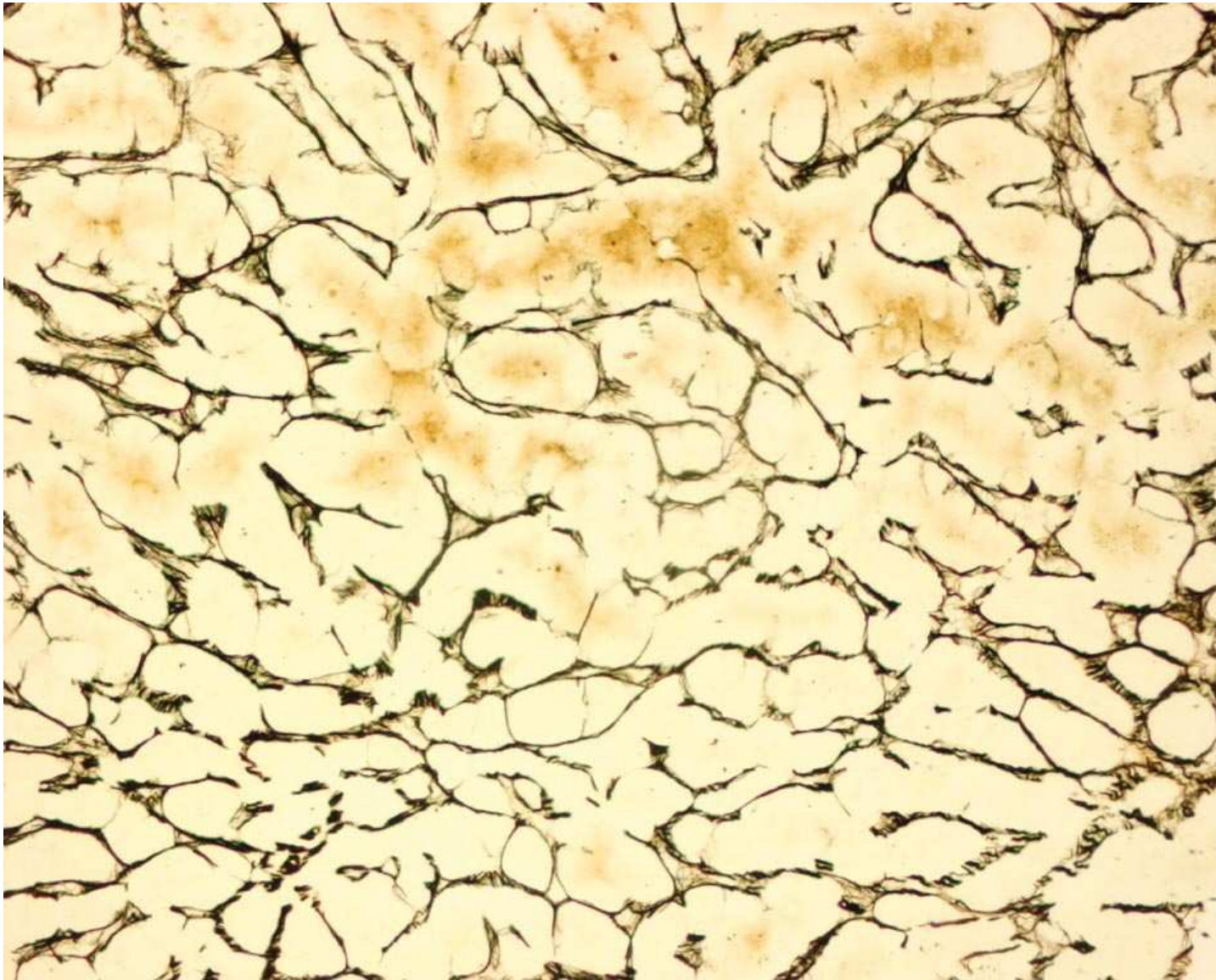
Southampton Cellular Pathology



Southampton Cellular Pathology



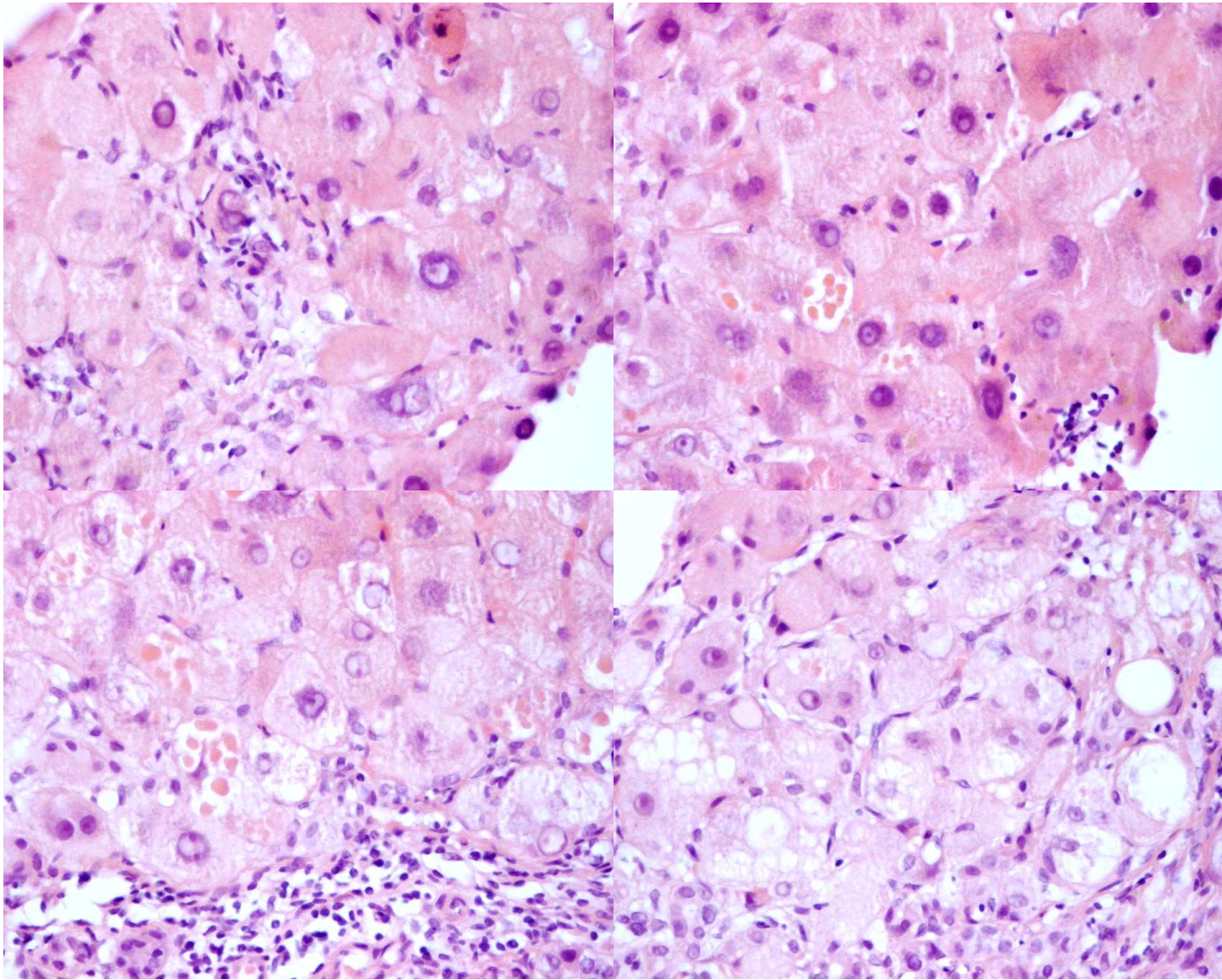
Southampton Cellular Pathology



Southampton Cellular Pathology



Southampton Cellular Pathology



Southampton Cellular Pathology

# Alpha-1-antitrypsin deficiency with large cell dysplasia

PiZZ phenotype

# Alpha-1-antitrypsin deficiency

- PiZ and PiS are the most common deficiency alleles
- PiZ in 1-2% of Caucasians
  - Homozygosity [1 in 200-6000] associated with liver and lung disease
  - Disease may develop in childhood or not until adult life

# Messages

- Alpha-1-antitrypsin globules may be visible on haematoxylin & eosin stain
  - May also sometimes only be diagnosed on IHC
- Association with liver cell dysplasia and hepatocellular carcinoma
- Hard to diagnose hepatocellular carcinoma in the absence of an expansile nodule